

Waterman's
DESK SETS

1937



No. 516/62 $\frac{1}{2}$ - \$5.00

3" round Black and Gold Marble base, chrome sheath, Jet pen as illustrated.

With Onyx base, gold-filled sheath, Brown pen, same price.



No. 501/62 $\frac{1}{2}$ - \$6.00

With Black and Gold or Belgian Black Marble, or White or African Brown Onyx, pens and trim to match.

No. 501/62 - \$8.00

2 $\frac{1}{4}$ x 4 Black Aragonite base, with chrome sheath and Jet pen as illustrated - or Green Onyx base, with gold-filled sheath and Green pen.



No. 511/62 $\frac{1}{2}$ - \$6.00

3 x 4 African Brown Onyx base, gold-filled sheath, Brown pen, as illustrated.

No. 511/62 - \$8.00

With Green Onyx base, gold-filled sheath, pen to match.



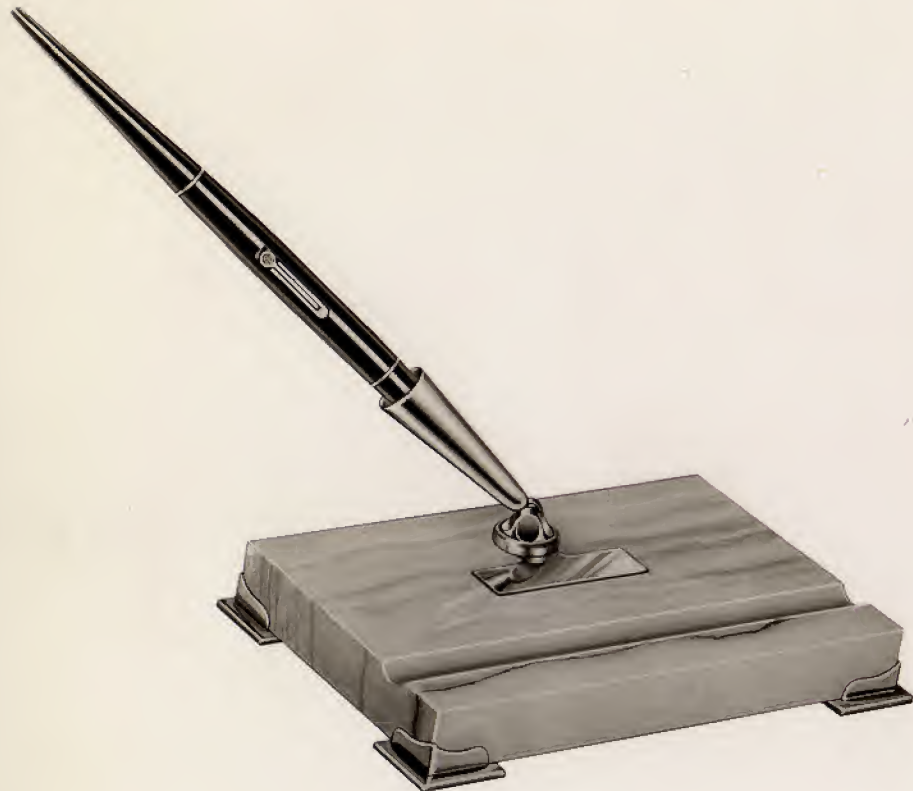
No. 504/64 - \$10.00

A most appropriate set for equipping desks of an office personnel. Useful, conservative. 4 x 6 Black Catalin base. Jet pen, chrome trimmed. This is an unusually good buy.



No. 503/62 - \$10.00

3 x 4½ White Onyx, African Brown Onyx or Black and Gold Marble base, gold-filled name plate and sheath -- or Belgian Black Marble base, chrome name plate and sheath -- pen to match base.



No. 509/67 - \$20.00

4 x 6 White Onyx (illustrated), Belgian Black or African Brown base, chrome sheath, name plate and corner stands, Jet pen.

With Green Onyx base, gold-filled sheath, name plate and corner stands, pen to match, complete \$23.00.



No. 505/67 - \$15.00

4 x 6 Black and Gold Marble (illustrated) White Onyx or African Brown Onyx base, gold-filled pen sheath, name plate and pen to match.

With Belgian Black Marble base, chrome finish, \$15.00.

With Brazilian Green Onyx base, \$18.00.



No. 525/67 - \$25.00

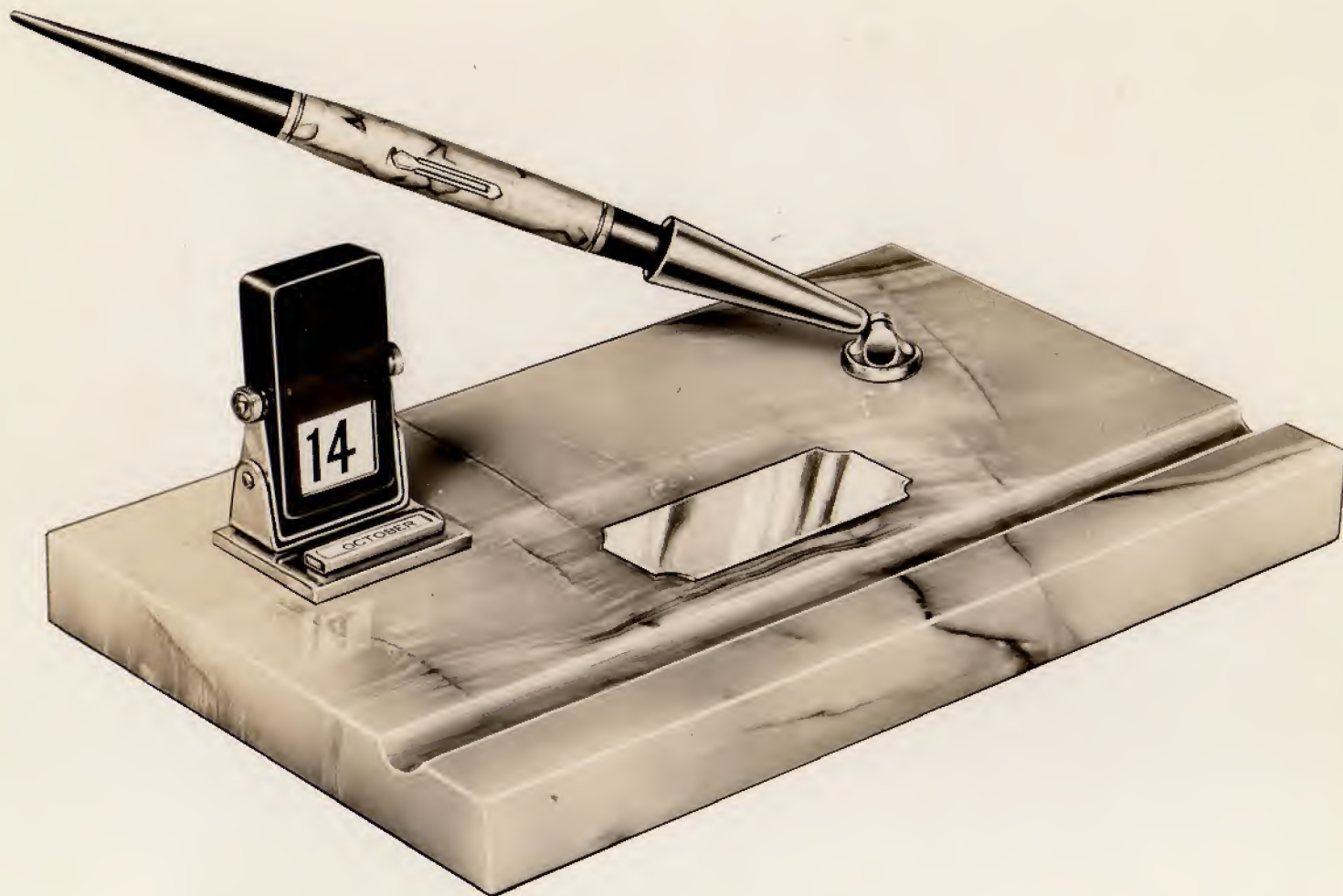
5 x 8 Black and Gold Marble, Belgian Black Marble, White Onyx or African Brown Onyx base. Pens and sheaths to match.



No. 418/67 - \$22.00

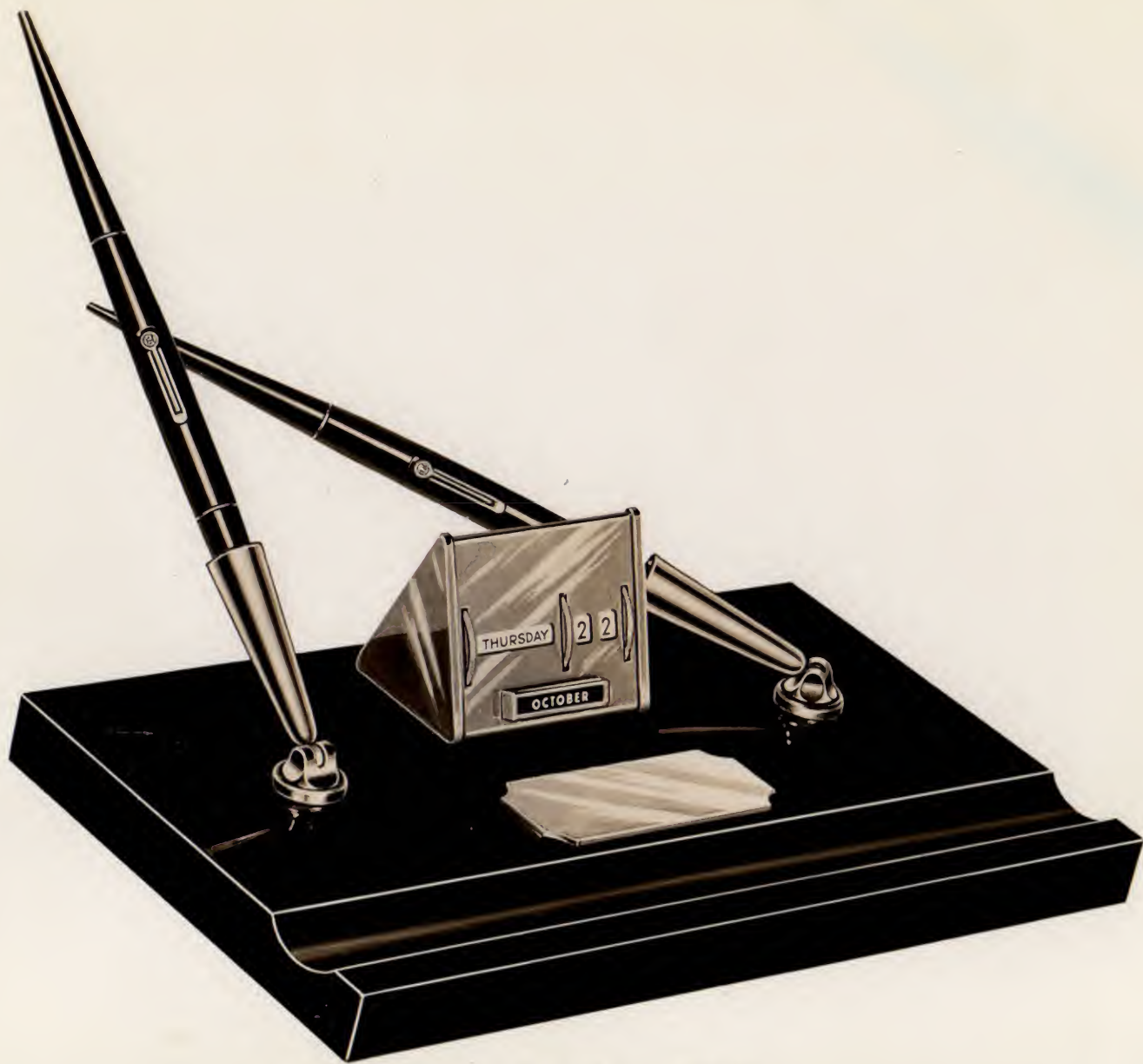
Jet Turn-Over Perpetual Calendar, 5 x 8 White Onyx or Black and Gold Marble base. Chrome trim and name plate. Jet pen and sheath.

With Belgian Black Marble or Green Onyx base, pen to match, \$25.00.



No. 439/67 - \$25.00

Russet Colored Metal Turn-Over Perpetual Calendar with gold-filled trim, sheath and name plate, on 6 x 10 White Onyx base, Onyx pen (illustrated) -- or Black and Chrome Calendar on Black and Gold Marble base -- or all Chrome Calendar on Belgian Black Marble base -- pen to match.



No. 448/67 - \$40.00

Chrome Triangle Model Calendar, on 6 x 10 Belgian Black
Marble base, chrome sheaths and name plate, Jet pens.



No. 450/67 - \$50.00

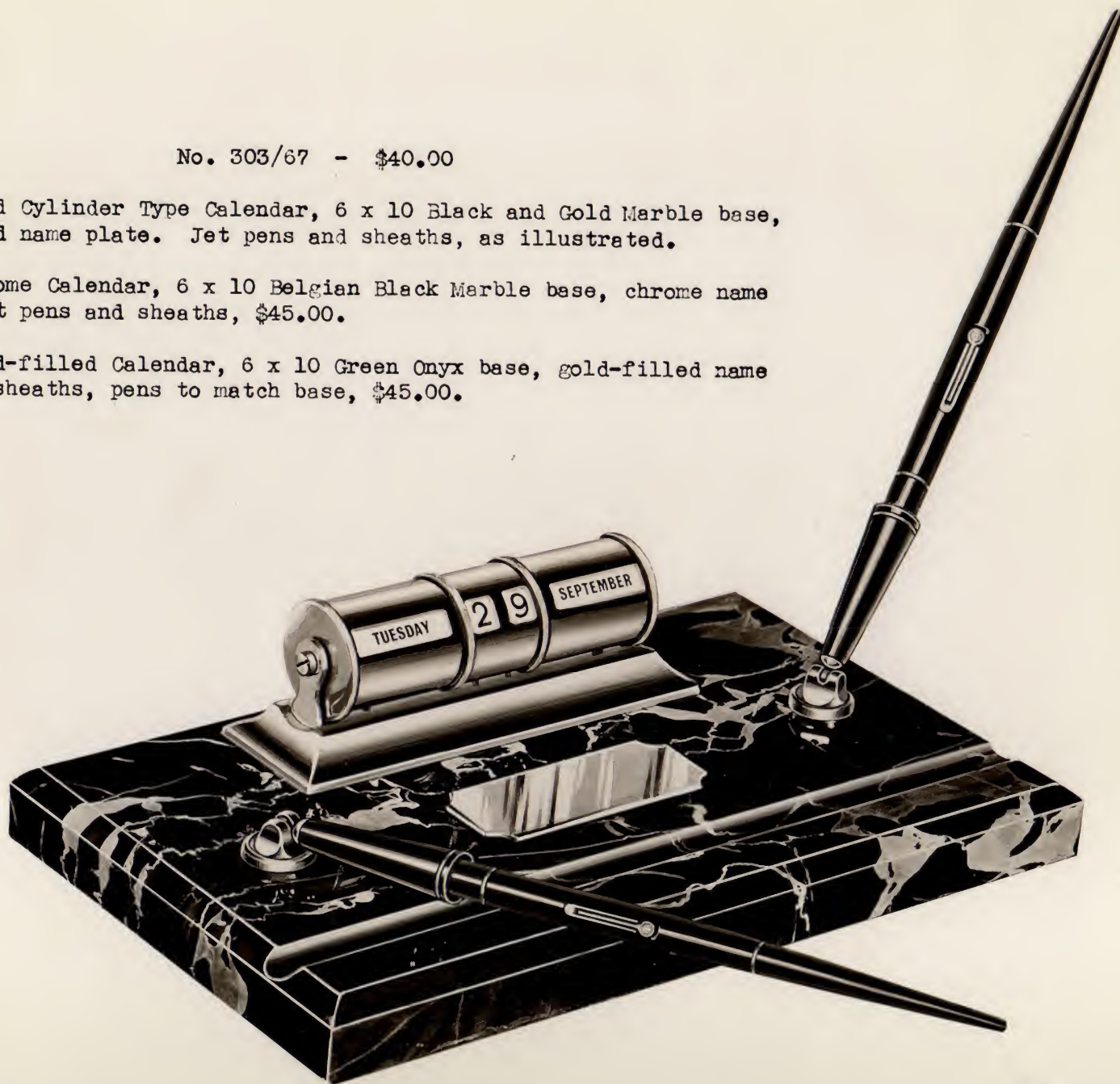
Lamp, Solid Bronze Gun-Metal Color, chrome trim,
7 x 13 White Onyx base, chrome sheaths, two pens.

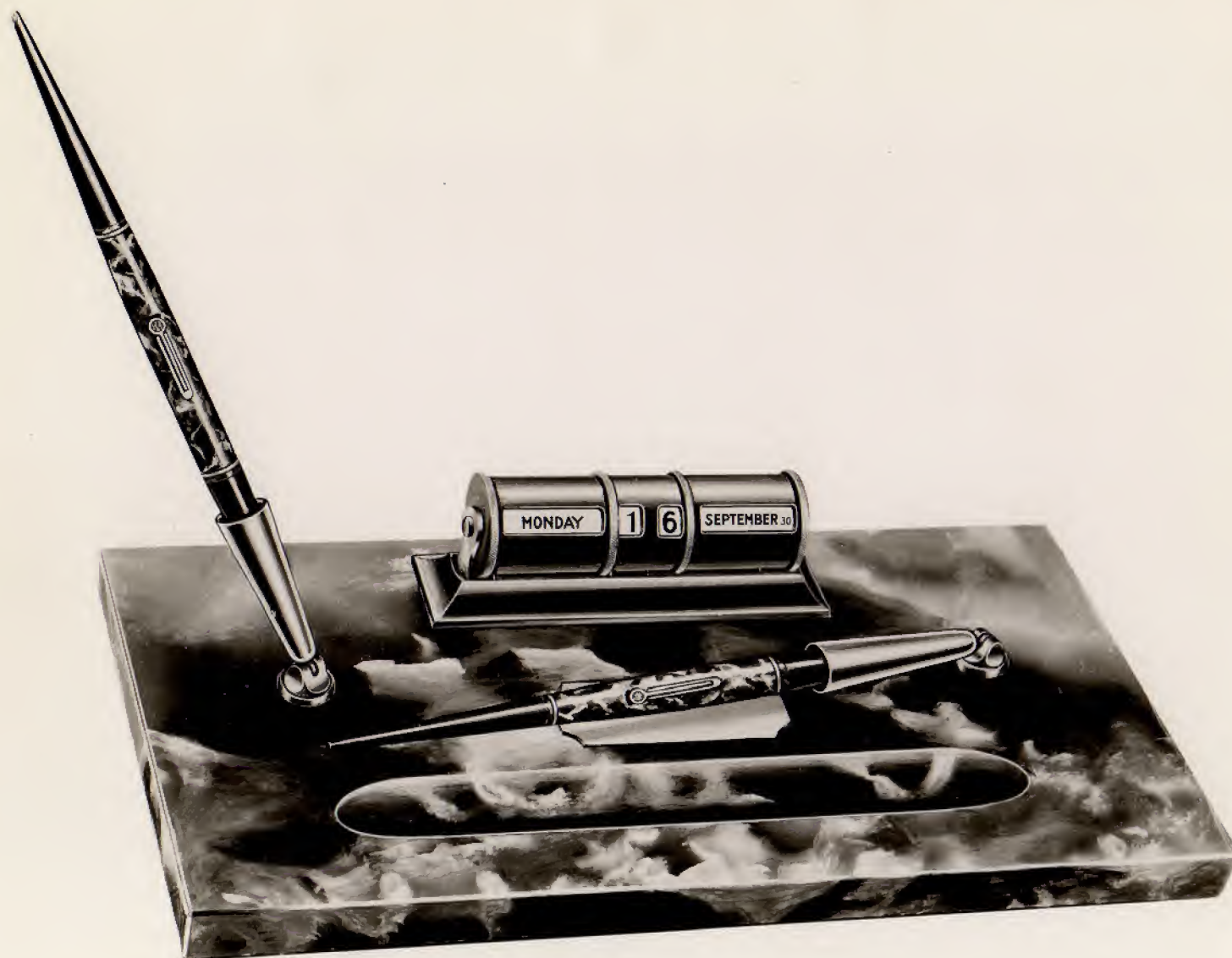
No. 303/67 - \$40.00

Gold-filled Cylinder Type Calendar, 6 x 10 Black and Gold Marble base, gold-filled name plate. Jet pens and sheaths, as illustrated.

With Chrome Calendar, 6 x 10 Belgian Black Marble base, chrome name plate. Jet pens and sheaths, \$45.00.

With gold-filled Calendar, 6 x 10 Green Onyx base, gold-filled name plate and sheaths, pens to match base, \$45.00.





No. 436/67 - \$55.00

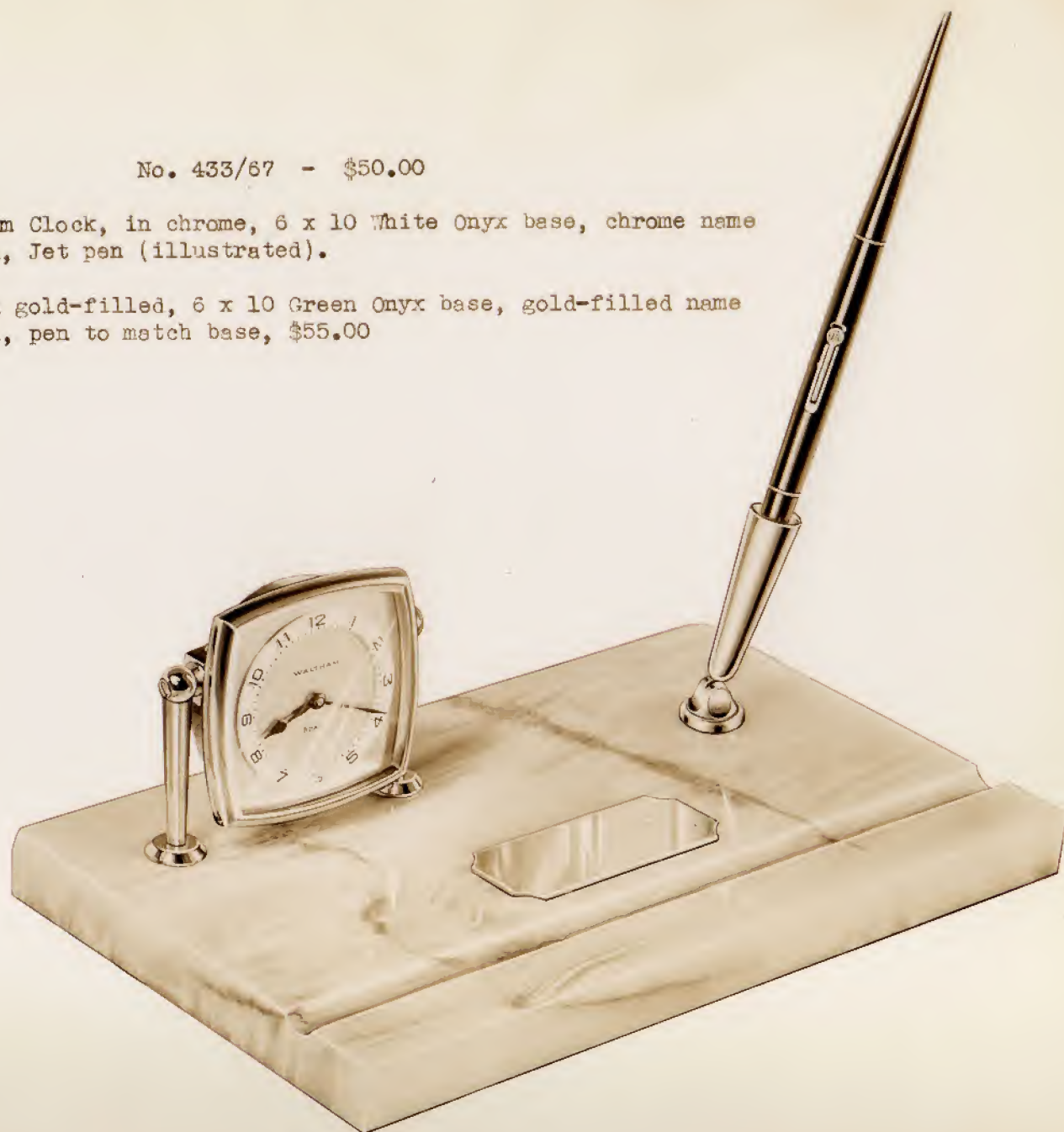
Gold-filled cylinder type Perpetual Calendar, name plate and sheaths,
7 x 13 Brazilian Green Onyx base, two pens to match, as illustrated.

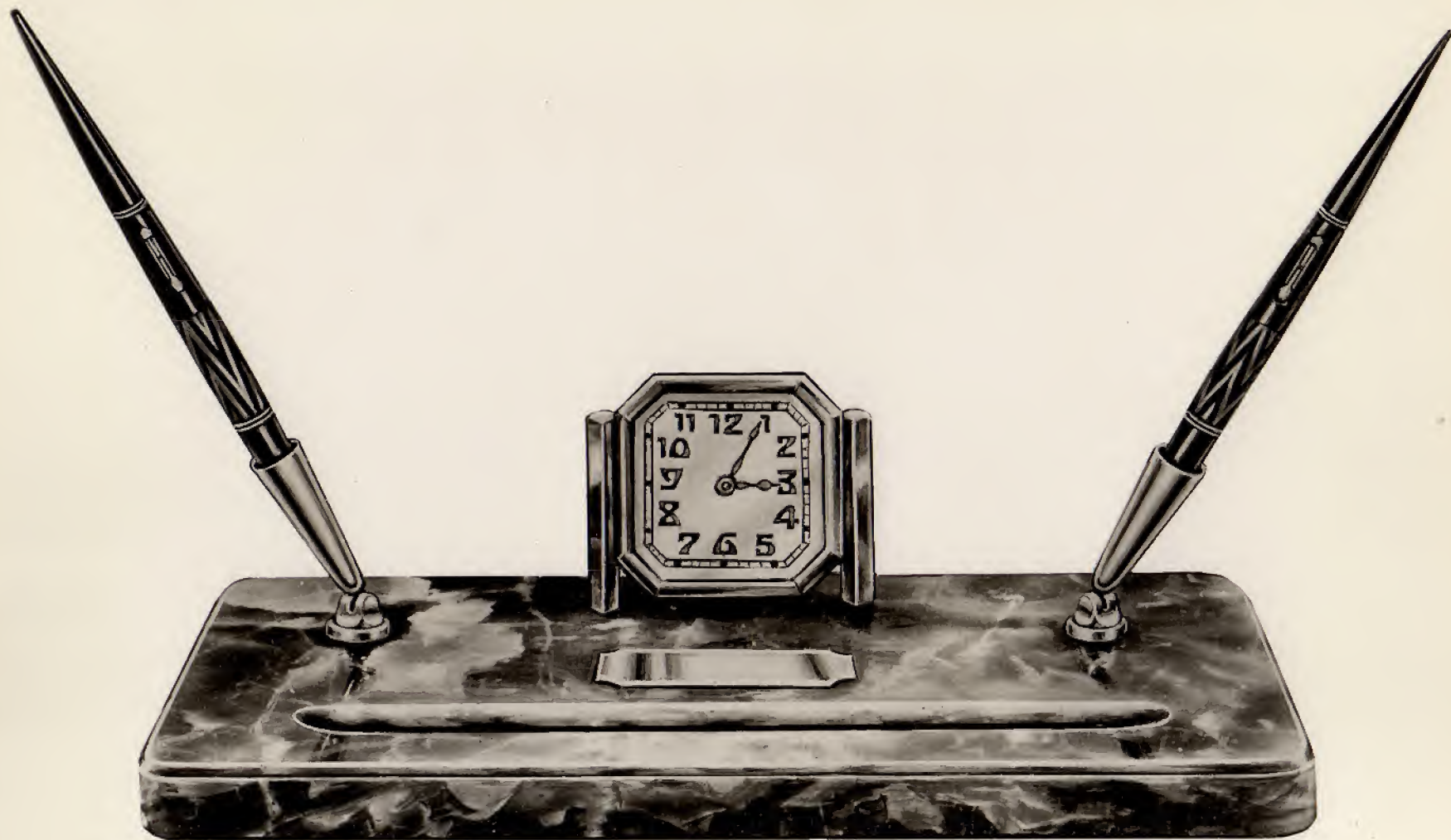
With a White Onyx, Black and Gold Marble or Belgian Black Marble
Base, \$50.00.

No. 433/67 - \$50.00

Eight-day Waltham Clock, in chrome, 6 x 10 White Onyx base, chrome name plate and sheath, Jet pen (illustrated).

Same clock, in gold-filled, 6 x 10 Green Onyx base, gold-filled name plate and sheath, pen to match base, \$55.00





No. 438/67 - \$75.00

Elgin 8-Day Clock, gold-filled finish, sheaths and name plate, on 7 x 13 Green Onyx base, two pens to match.



No. 419/67 - \$75.00

Elephant, 8 in. high, Green Colored Solid Bronze, 7 x 13 Green Onyx base, sheath and name plate Matt Green Gold finished, pen to match.



No. 446/67 - \$100.00

Waltham 8-Day Clock, $7\frac{1}{2}$ x 12 Black and Gold Marble base, sheaths and name plate English gold finished, two pens, Letter Opener, Letter Rack and Rocker Blotter.



No. 1739/67 - \$110.00

Electric Clock (for A. C. current only), gold-filled trim, with sheaths and name plate finished to match. 9 x 17 $\frac{1}{2}$ White Onyx base, two pens.

Or with same clock, chrome trimmed, with sheaths and name plate to match.



No. 502/62 - \$10.00

3 x 4 1/2 White Onyx base, chrome or gold-filled decorative name plate and pen sheath, chrome or gold-filled trimmed Onyx pen.



No. 506/62 - \$9.00

3 x 4 Sapphire Blue or Steel Grey glass mirror base, chrome sheath, Jet pen - or Gold glass mirror base, gold-filled sheath, Jet pen.



No. 70/62 - \$10.00

Green Onyx base with 3" square gold-filled frame and sheath, Jade Green pen.



No. 510/62 - \$10.00

A handsome modern set of Black Aragonite on $2\frac{1}{2}$ x $4\frac{1}{2}$ chrome metal base. Chrome sheath. Jet pen.



No. 447/62 - \$15.00

A new and most unusual design in a desk set, 5 inches diameter, Black Marble and White Onyx base, Jet pen and sheath.



No. 384/62 - \$17.50

Jet Turn-Over Perpetual Calendar,
on 4 x 6 White Onyx base, Jet pen
and sheath.



No. 444/62 - \$15.00

Chrome Cylinder Type Perpetual Calendar
on 4 x 6 White Onyx base. Jet pen and
sheath.



No. 390/62 - \$18.00

Dachshund, on 4 x 6 White Onyx base,
chrome name plate, Jet pen and sheath.



No. 508/67 - \$18.00

$5\frac{1}{4}$ x $8\frac{1}{4}$ Belgian Black Marble base
ornamented with a deep inlay of Red
and White, chrome trimmed Jet sheath
and chrome name plate, Jet pen.



No. 46/67 - \$45.00

Bowler, Rose Gold Plated, sheaths and name plate to match, 8 x 13 Black and Gold Marble base, two pens.



No. 411/67 - \$65.00

Blind Justice, Green Colored Solid Bronze, 6 x 10 Green Onyx base, sheaths and name plate Matt Green Gold finished, two pens.

DESK SET INFORMATION

The bases for the 1937 desk set line as shown on the pictures enclosed are made from the following stones:

White Onyx - Contains brown markings - except where used with chrome trimming, in which case it is pure white.

Brazilian Green Onyx - The beautiful green flaky onyx.

African Brown Onyx - A rich brown color, well marked.

Black and Gold Marble - A black stone containing veins and markings of gold and grey.

Belgian Black Marble - An intense solid black, generally used with chrome trim.

Black Aragonite - A black stone with slight veins or flakes of grey.

There are also one or two sets with bases of glass or Catalin.

IMPORTANT

When ordering desk sets be sure that the correct number for both base and pen is given - and in addition, always indicate the color of base desired. It is not necessary to specify the color of desk pen or of metal trim as these are regularly furnished to match the base.

July 29, 1937

RETAIL PRICE LISTALL DESK FENS PRICED LESS CAPS

62 $\frac{1}{2}$ V	Plain - plain taper end - less cap	\$2.50
62 $\frac{1}{2}$ V	Plain - red taper end - less cap	2.50
62 $\frac{1}{2}$ V	Plain - green taper end - less cap	2.50
62 $\frac{1}{2}$ V	Plain - orange taper end - less cap	2.50

June 4, 1937

RETAIL PRICE LISTALL DESK PENS PRICED LESS CAPS

62 $\frac{1}{2}$ Jet -	Taper end to match, less cap, Chrome Mounts	\$3.00
62 $\frac{1}{2}$ Jet	Taper end to match, less cap, G. F. Mounts	3.00
62 $\frac{1}{2}$ Grey	Plain taper end, less cap, chrome mounts	3.00
62 $\frac{1}{2}$ Brown	Plain taper end, less cap, G. F. Mounts	3.00
62 $\frac{1}{2}$ Brown	Plain taper end, less cap, Chrome mounts	3.00
62 $\frac{1}{2}$ Sapphire Blue	Plain taper end, less cap, G. F. Mounts	3.00
62 $\frac{1}{2}$ Blue (94 color)	Plain taper end, less cap, G. F. Mounts	3.00
62 $\frac{1}{2}$ Blue (94 color)	Plain taper end, less cap, Chrome mounts	3.00
62 $\frac{1}{2}$ Turquoise	Plain taper end, less cap, Chrome mounts	3.00
62 $\frac{1}{2}$ Turquoise	Plain taper end, less cap, G. F. Mounts	3.00
62 $\frac{1}{2}$ Ripple Rubber	Taper end to match, less cap, G. F. Mounts	3.00

June 4, 1937

RETAIL PRICE LISTALL DESK PFNS PRICED LESS CAPS

62 Jet	Taper end to match, less cap, chrome mounts	\$4.00
62 Jet	Taper end to match, less cap, G. F. mounts	4.00
62 Onyx	Taper end to match, less cap, G, F. Mounts	4.00
62 Onyx	Taper end to match, less cap, Chrome mounts	4.00
62 Jade Pearl	Taper end to match, less cap, G. F. Mounts	4.00
62 Jade Pearl	Taper end to match, less cap, Chrome mounts	4.00
62 Ivory	Taper end to match, less cap, G. F. Mounts	4.00
62 Ovary	Taper end to match, less cap, Chrome Mounts	4.00

64 Jet	Taper end to match, less cap, chrome mounts	5.00
64 Jet	Taper end to match, less cap, G. F. Mounts	5.00
64 Nacre	Plain taper end, less cap, Chrome Mounts	5.00
64 Onyx	Taper end to match, less cap, G. F. Mounts	5.00

June 4, 1937

RETAIL PRICE LIST
ALL DESK PENS PRICED LESS CAPS

67 Jet	Taper end to match, less cap, Chrome Mounts	\$7.00
67 Jet	Taper end to match, less cap, G. F. Mounts	7.00
67 Jade Pearl	Taper end to match, less cap, G. F. Mounts	7.00
67 Jade Pearl	Taper end to match, less cap, Chrome Mounts	7.00
67 Blue & Gold -	Plain taper end, less cap, G. F. Mounts	7.00
67 Nacre	Plain taper end, less cap, Chrome Mounts	7.00
67 Onyx	Crimson taper end, less cap, G. F. Mounts	7.00
67 Ripple Rubber -	Taper end to match, less cap, G. F. Mounts	7.00
67 Rose	Taper end to match, less cap, G. F. Mounts	7.00
67 Olive	Taper end to match, less cap, G. F. Mounts	7.00
67 Jet - Ink Vue -	plain taper end, less cap, Chrome Mounts	7.00
67 Jet - Ink Vue -	plain taper end, less cap, G. F. Mounts	7.00
67 Silver Ray - Ink Vue -	Plain taper end, less cap, Chrome mounts	7.00
67 Emerald Ray - Ink Vue -	Plain taper end, less cap, G. F. Mounts	7.00
67 Onyx - Fat Size -	Crimson taper end, less cap, G. F. Mounts	7.00
67 Onyx - Pat Size -	Crimson taper end, less cap, Chrome Mounts	7.00
67 Turquoise Pat. Size -	Plain taper end, less cap, G. F. Mounts	7.00

June 4, 1937

RETAIL PRICE LISTALL DESK PENS PRICED LESS CAPS.

#0365 Plain,	regular finish, plain taper end, less cap	\$10.00
#0365 Plain,	regular finish, red taper end, less cap	10.00
#0365 Plain,	Matt Green, plain taper end, less cap	10.00
#0365 Plain,	Matt Green, red taper end, less cap	10.00

262 $\frac{1}{2}$ V Plain,	Plain taper end, less cap, Sterling B & L	5.00
----------------------------	---	------

262 $\frac{1}{2}$ Plain	Plain taper end, less cap, Sterling B & L	8.00
-------------------------	---	------

362 $\frac{1}{2}$ Plain	Plain taper end, less cap, 14 kt B & L	25.00
-------------------------	--	-------

265 Plain	Plain taper end, less cap, Sterling B & L	12.00
-----------	---	-------

365 Plain	Plain taper end, less cap, 14 kt B & L	35.00
-----------	--	-------